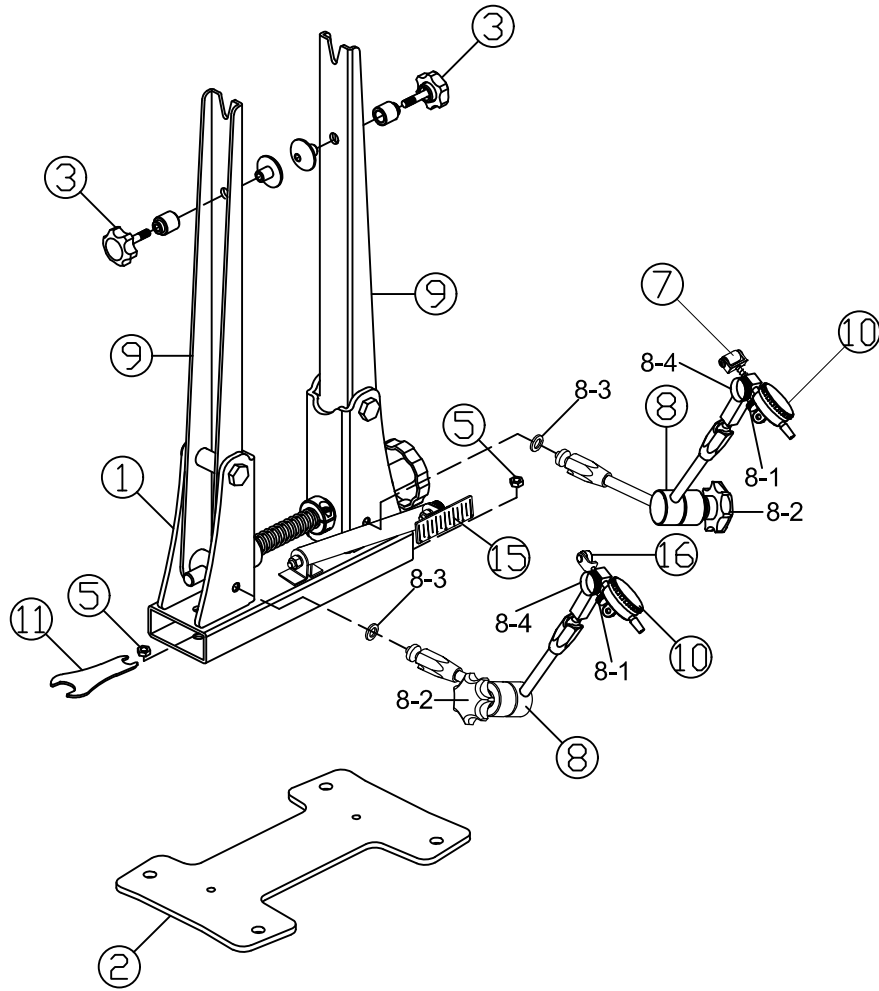
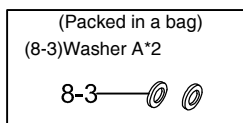
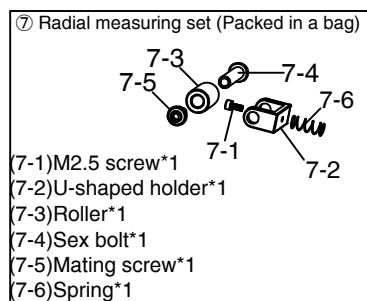
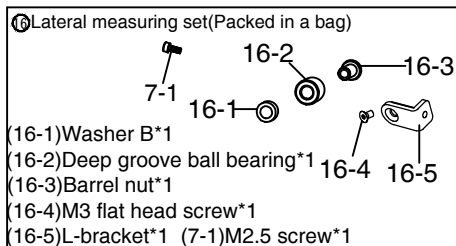
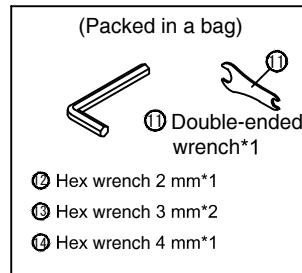
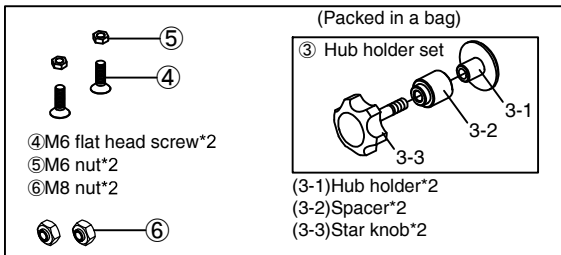


### 1 Parts description

Visit operation detail at Super B  
 Website: <http://www.superbiketool.com/>,  
 Click Product ➔ Wheelset truing stands ➔ 1. ➔ TB-PF30



NO	PARTS	Q'TY
①	Body	1
②	Base	1
③	Hub holder set	2
3-1	Hub holder	2
3-2	Spacer	2
3-3	Star knob	2
④	M6 flat head screw	2
⑤	M6 nut	2
⑥	M8 nut	2
⑦	Radial measuring set	1
7-1	M2.5 screw	1
7-2	U-shaped holder	1
7-3	Roller	1
7-4	Sex bolt	1
7-5	Mating screw	1
7-6	Spring	1
⑧	All-purpose arm	2
8-1	Fine-tuning knob	2
8-2	Knob	2
8-3	Washer A	2
8-4	Dial indicator knob	2
⑨	Upright	2
⑩	Dial indicator	2
⑪	Double-ended wrench	1
⑫	Hex wrench 2 mm	1
⑬	Hex wrench 3 mm	2
⑭	Hex wrench 4 mm	1
⑮	Measuring ruler	1
⑯	Lateral measuring set	1
7-1	M2.5 screw	1
16-1	Washer B	1
16-2	Deep groove ball bearing	1
16-3	Barrel nut	1
16-4	M3 flat head screw	1
16-5	L-bracket	1



## 2 Assembly

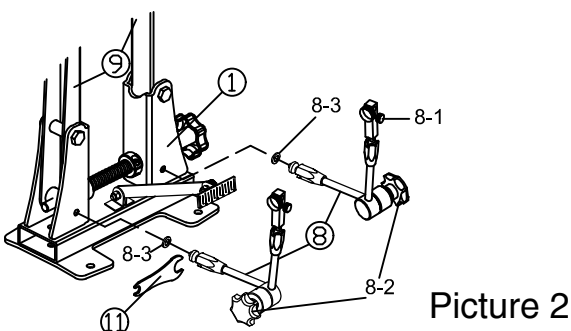
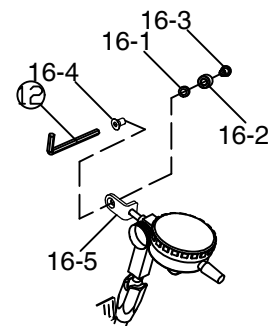
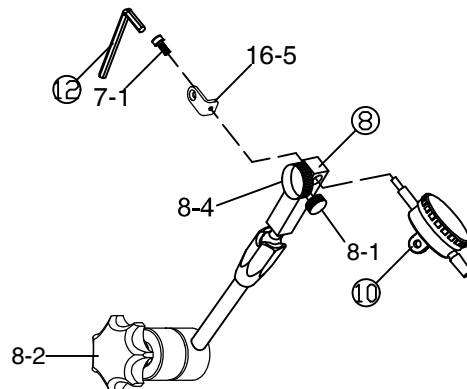
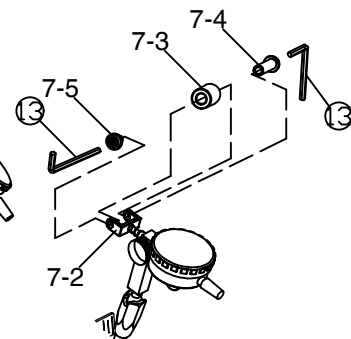
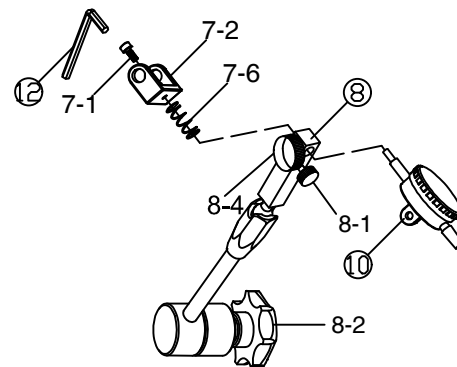
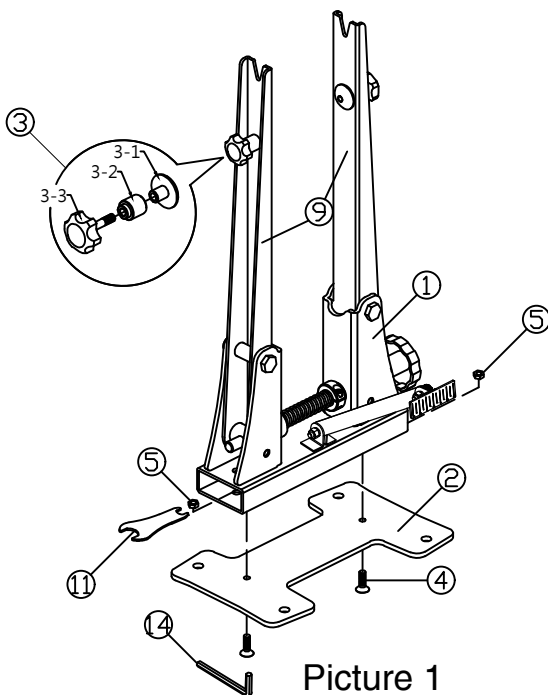
1. Install the base ② and body ① with double-ended wrench ⑪, hex wrench 4 mm ⑭, M6 flat head screw ④ and M6 nut ⑤. Then, install hub holder set ③ on uprights ⑨.(see picture 1)
2. Firstly, loosen the knob(8-2)of all-purpose arms ⑧, and use double-ended wrench ⑪ to assemble all-purpose arms ⑧ and washer A(8-3)on the body ①.(see picture 2)  
(Note: In case you do not assemble washer A(8-3), the uprights ⑨ will not be operated.)
3. Loosen the dial indicator knob(8-4), set the two dial indicators ⑩ separately on all-purpose arms ⑧, and then tighten the dial indicator knob (8-4).(see picture 3)
4. Assemble the radial measuring set ⑦ on dial indicator ⑩.
  - 4-1. Remove the contact point of the right dial indicator ⑩.
  - 4-2. Assemble M2.5 screw(7-1), U-shaped holder(7-2), and spring(7-6)on the right dial indicator ⑩ by hex wrench 2 mm ⑫.(see picture 3)
  - 4-3. Assemble roller(7-3), sex bolt(7-4)and mating screw(7-5)on U-shaped holder(7-2) by 2 hex wrenches 3 mm ⑬.(see picture 4)
5. Assemble the lateral measuring set ⑬ on dial indicator ⑩.
  - 5-1. Remove the contact point of the left dial indicator ⑩.
  - 5-2. Assemble M2.5 screw(7-1), L-bracket(16-5)on the left dial indicator ⑩ by hex wrench 2 mm ⑫ (see picture 5)
  - 5-3. Assemble M3 flat head screw(16-4), washer B(16-1), deep groove ball bearing(16-2), barrel nut(16-3)on L-bracket(16-5)by hex wrench 2 mm ⑫ and slotted screwdriver.(see picture 6)




Be aware of the direction of base ②.  
The longer side should face the operator.



Be sure to loosen the knob 8-2 before adjusting the all-purpose arms ⑧ for fear of breaking the inside joint.




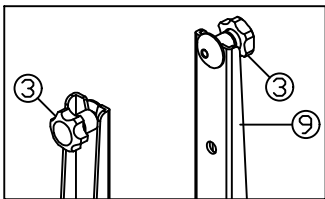
**3 Instruction**

 Please securely fix the hub on uprights ⑨ to ensure the truing accurately.

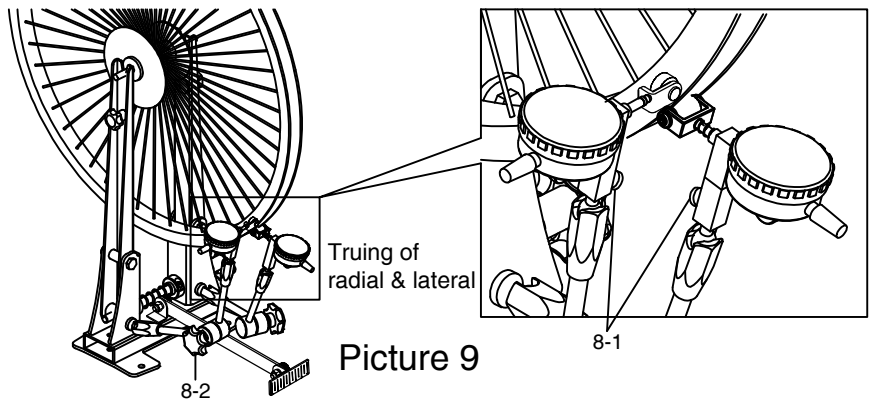
**Rim truing :**

1. Set the hub on uprights ⑨ which are suitable for quick-release hub and threaded hub. (see picture 8)
2. If the hub is a thru-axle hub (12 to 20 mm), please set the hub holder set ③ on the top of uprights ⑨. (see picture 7)
3. Move the measuring ruler ⑮ to be close to the rim and proceed initial truing till the tolerance of radial and lateral is less than  $\pm 2$  mm. (see picture 8)  
(Notice: The tolerance must be less than measuring range of dial indicator ⑩.)
4. Put the measuring ruler ⑮ away when initial truing is done.
5. Loosen the knob (8-2) to make the dial indicator ⑩ to be close to the rim (without actual contact) and then tighten it (8-2).
6. Adjust the fine-tuning knob (8-1) to make the dial indicator ⑩ contacted the rim. (see picture 9)
7. Make sure the dial indicators ⑩ are vertical with the rim.
8. True the rim precisely according to the dial indicator ⑩.
9. Suggest truing with wheel alignment gauge (TB-1930) (optional).
10. When truing is done, adjust the fine-tuning knob (8-1) to keep the dial indicator ⑩ away from the rim.
11. Loosen the knob (8-2) to move the dial indicator ⑩ away from the rim and then tighten it (8-2).
12. After TB-PF30 has been used for a year, check and calibrate it with truing stand correction gauge (TB-PF33) (optional).

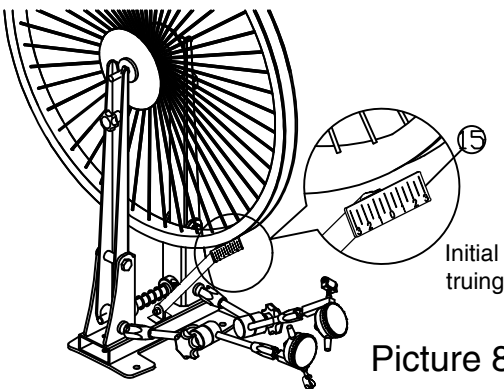
 The measuring range of dial indicator ⑩ is from 0.01mm to 5 mm. Please avoid exceeding the maximum




Picture 7

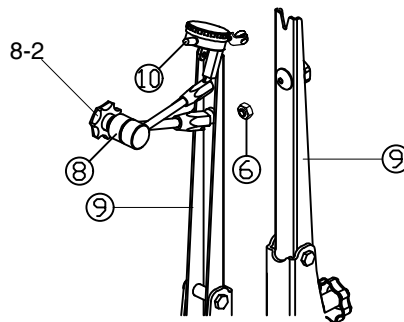


Picture 9



Picture 8

 While assembling the left all-purpose arm ⑧, please keep the dial indicator ⑩ from physical impact or it could lose its accuracy.



Picture 10



Picture 11

**Rotor truing :**

1. Loosen the knob (8-2) and remove the left all-purpose arm ⑧.
2. Install the all-purpose arm ⑧ on the left upright ⑨ with M8 nut ⑥. (see picture 10)
3. Loosen the knob (8-2) to make the dial indicator ⑩ to be close to the rotor (without actual contact) and then tighten it (8-2).
4. Adjust the fine-tuning knob (8-1) to make the dial indicator ⑩ contacted the rotor. (see picture 11)
5. Make sure the dial indicator ⑩ is vertical with the rotor. (Notice: Avoid the dial indicator from touching the heat dissipation hole)
6. True the rotor precisely according to dial indicator ⑩ by rotor truing fork (TB-MW40) (optional).
7. When truing is done, adjust the fine-tuning knob (8-1) to keep the dial indicator ⑩ away from the rotor.
8. Loosen the knob (8-2) to move the dial indicator ⑩ away from the rotor and then tighten it (8-2).