

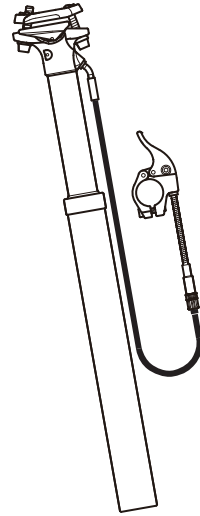


M-WAVE

## USER'S MANUAL



*Riding-fueled Innovation.*



**messingschlager**  
OVERMOTIVE

Hassbergstr. 45  
96148 Baunach - Germany

art. 252240/1

## How to Use

Easy height adjustment at your preference

### Lower the saddle

1. Lift body up then press the control lever and hold the action.
2. Sit on the saddle gently to the desired-position. Release the lever.

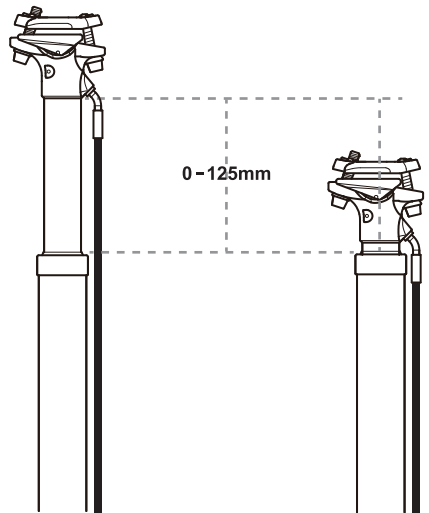


### Raise the saddle

1. Press the control lever and hold the action.
2. Un-weight the saddle, until it reached the desired position. Release the lever.

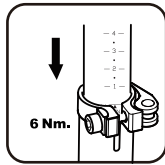


## Height Range

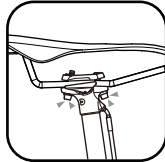


# Installations

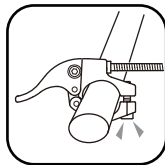
**1.** Insert seat post to the bike frame until cover the minimum insertion. Insufficient insertion could cause danger when ridding. To ensure smooth operation, please do not exceed 6Nm torque when fastening seat clamp.



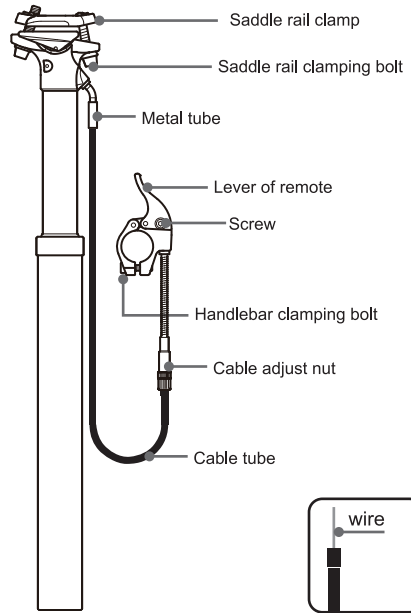
**2.** Loosen the saddle rail clamping bolts. Place the saddle rail to the clamp and adjust the angle. Use maximum 9~10 Nm to tighten the bolts.



**3.** Clamp remote on the handlebar. Tighten the handlebar bolt with maximum 3~4 Nm.

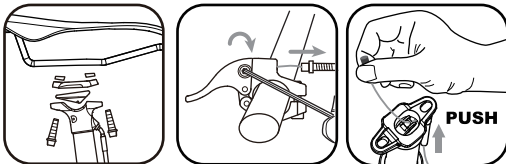


# Parts Breakdown



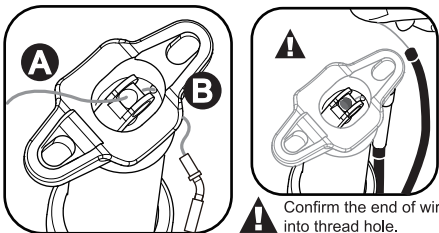
# Wire changing

## Remove the old wire

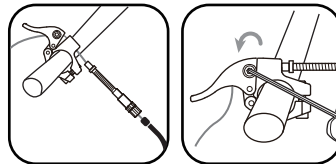


1. Remove the saddle, the saddle rail clamps and seatpost up/lower clamp.
2. Loosen the lever screw to release the wire, take out the wire from lever.
3. Push the wire up, then pull out the whole wire from top of seatpost

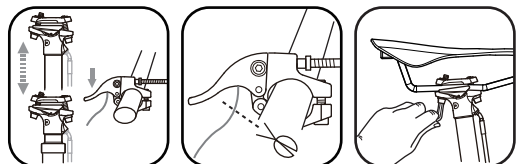
## Change new wire



4. Insert the wire from top of seatpost through (point A) and thread hole (point B); then threading the wire through the metal tube and black cable tube.



5. Insert the wire through the cable adjust nut and remote.
6. Pull the wire to tight, then tighten the screw on the lever.



7. Confirm the lever and seatpost can operate properly.
8. Cut off the extra wire.
9. Assemble back the saddle, follow the "installation Step2".